

EAST AFRICAN SAFARI CLASSIC RALLY

2023



Date: 8 DECEMBER 2023 **Time:** 1310 HRS
Subject: COMPETITORS INFO: 7 **Document No:** 7.7
From: RAJU CHAGGAR
To: ALL COMPETITORS / CREW MEMBERS

Number of pages: 02 (Two) Attachments: 0 (Zero)

Vipingo Ridge House Rules

1. Speed limits are strictly enforced. Please follow the 50kph and 30kph limits as directed. This is a residential estate, please respect our homeowners and other guests.
2. We are a wildlife sanctuary, please show caution and do not approach the wild animals. The zebra, gazelles and giraffe are not tame and should not be engaged.
3. Please do not litter and respect the your neighbours and keep noise levels to a minimum.
4. Please use the Service Parking or the Service spaces near the airstrip rather than the driveways of private homes.

Check in procedure Friday 8th December

Guest check in at Vipingo Ridge and the wider estates is from 15:30. [Please come to the Hub \(on the Map\) for orientation and check in.](#)

Meal Service 8th and 9th December

On Friday and Saturday Breakfast and dinner are served in the Sundowner bar. Buffet lunch will be available for 2500 KSH on the lawn behind the Clubhouse. This tented area overlooks a grassed Rally Parking area. We welcome you to come through the Clubhouse Car Park, onto the lawn, to park up and eat lunch overlooking the competitor collection. This view is also fantastic from the Clubhouse rooftop where you are invited to join us at 18:00 on Saturday 8th December.

Check out procedure Saturday 9th December

All guests will be required to have a Check out slip to exit the Main Gate. Check out will be at the Sundowner at dinner on 9th December. Please clear all bills and collect a slip for quick access through the Main Gate on Sunday morning. Keys should be left at Breakfast at the Sundowner on Sunday 10th December.

Packed lunch order for collection on Sunday 10th December

Teams will be invited to sign up for their packed lunches each day at the Sundowner from Breakfast on 8th December and at Dinner. Please also specify your collection time on the form so the packs are ready for collection. Collections will be from 04:30AM on 10th December.

Vehicle access

Access from 18:00 7th December will be granted, but your vehicles must be stickered with your livery.

End.



RAJU CHAGGAR

Event Director
East African Safari Rally LTD

Web www.theclassic-safari.com

Email eventdirector@eastafricansafarirally.com

Mobile [+254 715 961 457](tel:+254715961457)

Nairobi, Kenya



EAST AFRICAN SAFARI CLASSIC RALLY

2023



Welcome to Vipingo Ridge

Vipingo Ridge is a leading lifestyle destination celebrating Kenya. A residential estate, wildlife sanctuary and home to Africa's only PGA golf course, we partner with local developments to provide accommodation and amenities to our guests, homeowners and residents.

Accommodation

Guests check in for **The Villas, The Links, Private Homes** (houses numbered with an A- D- F- prefix) is at The Hub in the Main Resort. The Hub is also home to Rally HQ throughout your stay. Guest check in for **Awali, Palm Ridge and Pazuri** are all within the individual estates detailed on the map below. All guests staying within the wider estate complex are also able to access all of the Vipingo Ridge facilities and access through the gates in use.

Venues

In the Main Resort you will find two Vipingo Ridge restaurants.

The Sundowner - our big tent events space and the venue for your breakfast and dinner. Most lunches will also be served as a buffet at the Sundowner, apart from 8th and 9th December when the Clubhouse Lawn will be our venue. The Sundowner has a sports bar, 25m pool, tennis courts, boules and table tennis available here.

The Clubhouse - the centre of golf at Vipingo Ridge. The Pro Shop, gym, two bars overlooking the PGA-Baobab Course and coffee shop.

The Beach Club - a short drive the ocean across the road, enjoy drinks on white sands, watersports and our Beach Club restaurant. Please book in advance as this is a popular public restaurant. Search 'Vipingo Ridge Beach Club'.

House Rules

Speed limits are strictly enforced. Please follow the 50kph and 30kph limits as directed. This is a residential estate, please respect our homeowners and other guests.

We are a wildlife sanctuary, please show caution and do not approach the wild animals. The zebra, gazelles and giraffe are not tame and should not be engaged.

Please do not litter and respect the your neighbours and keep noise levels to a minimum.

vipingoridge.com

EAST AFRICAN CLASSIC SAFARI RALLY

VIPINGO RIDGE MAIN RESORT CLOSE UP



SUNDOWNER EVENT SPACE

BREAKFAST AND DINNER VENUE DAILY AND LUNCH ALL DAYS EXCEPT FROM 8TH & 9TH DECEMBER

25M POOL AVAILABLE TO ALL

BAR AND COFFEE SHOP TENNIS CLUB, BOULES AND TABLE TENNIS

THE HUB AND CONFERENCE CENTRE

ACCOMMODATION CHECK IN THE VILLAS, THE LINKS AND PRIVATE HOMES

RALLY HQ DRIVER CHECK IN, SCRUTINEERING, PARC FERME, DRIVERS BRIEFING

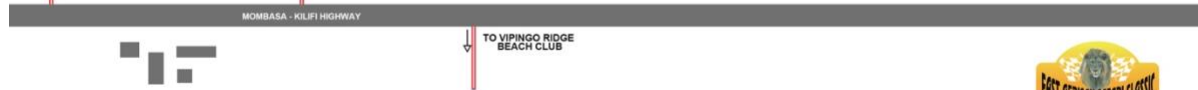
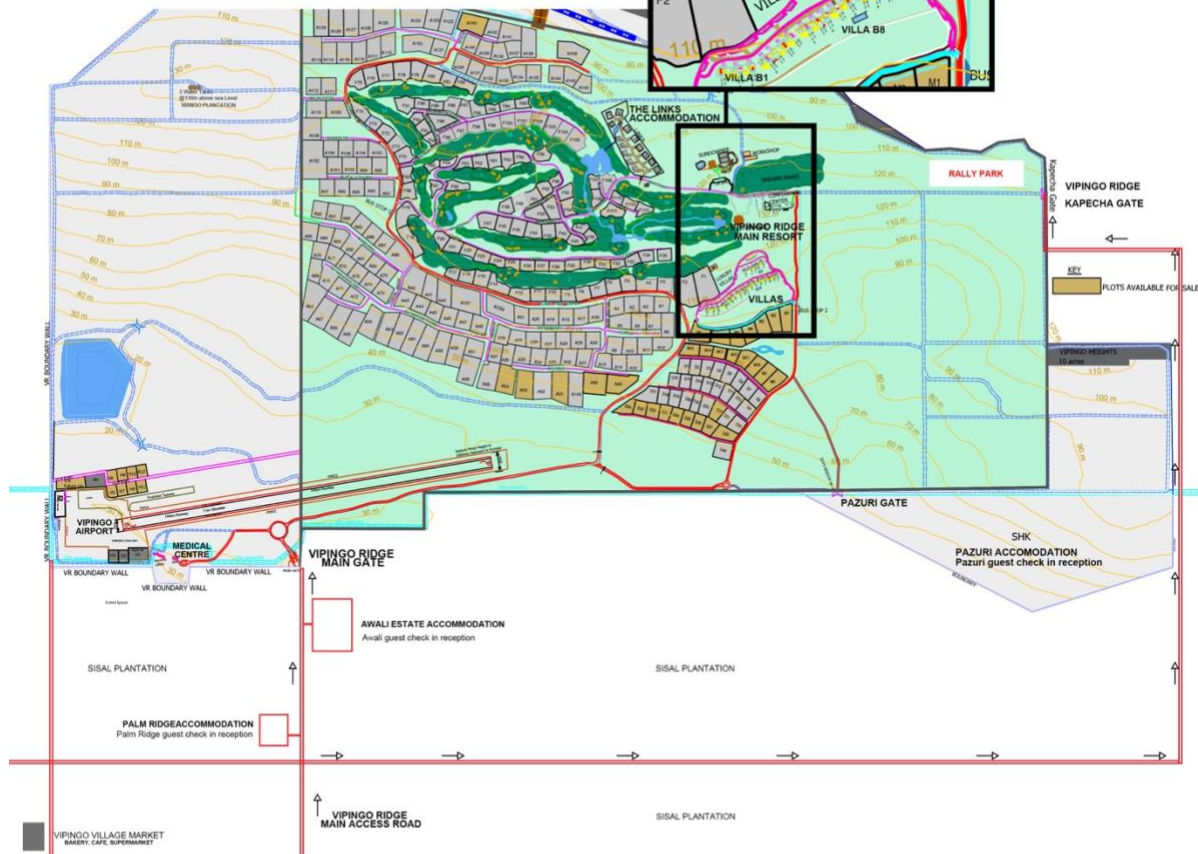
EASCR VIP EXPERIENCE START

THE CLUBHOUSE

COFFEE SHOP AND BAR

GOLF PROSHOP

GYM



VIPINGO VILLAGE SHOPS

